

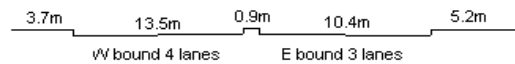
YEAR 2013

CORE STATION 1010

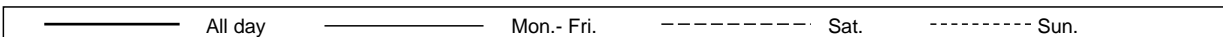
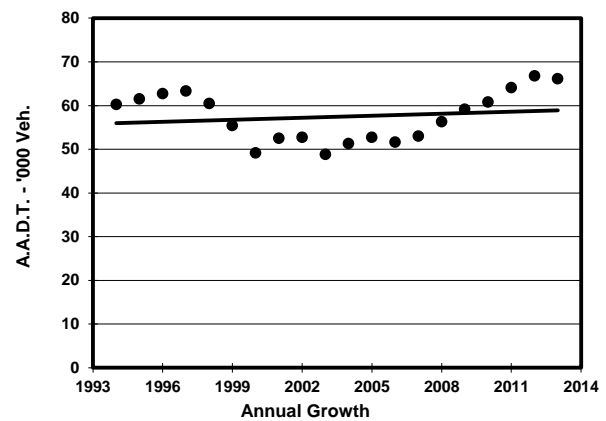
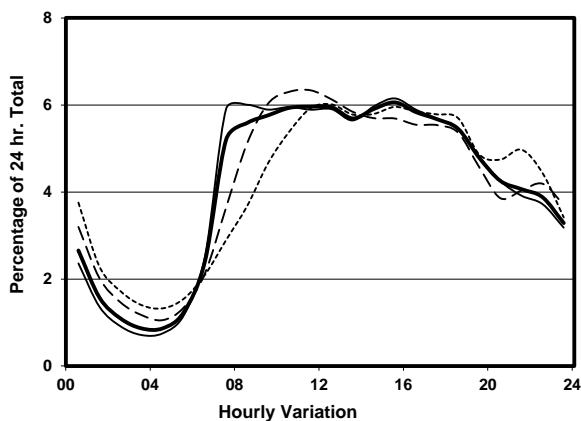
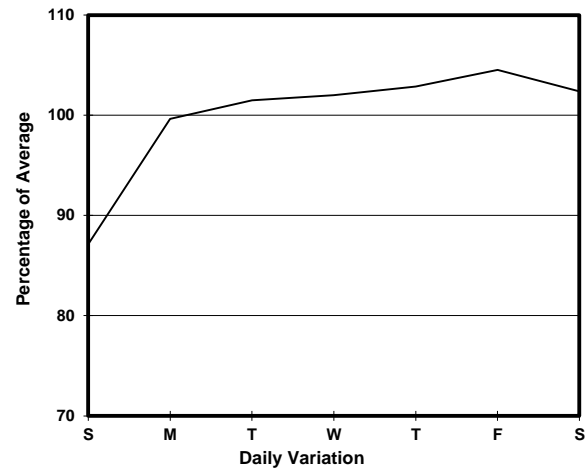
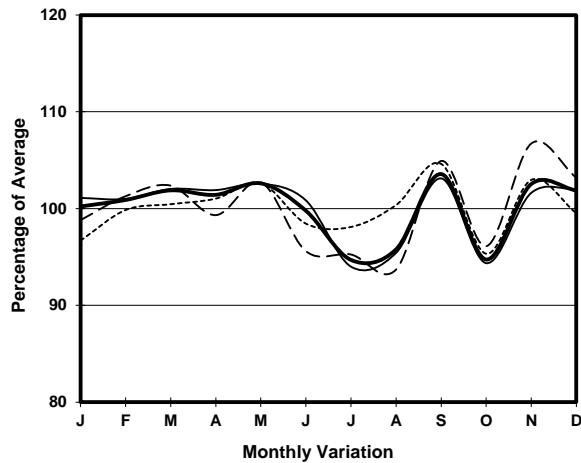
ROAD NETWORK MAJOR

ROAD TYPE PRIMARY DISTRIBUTOR

LINK WONG CHUK HANG RD (from NAM LONG SHAN RD to NAM FUNG RD)



## 1. TRAFFIC FLOW VARIATION AND GROWTH



## 2. TRAFFIC CHARACTERISTICS (BY DIRECTION)

| Parameter                            | All - Day | Mon. - Fri. | Sat.      | Sun.      |
|--------------------------------------|-----------|-------------|-----------|-----------|
| <b>EAST BOUND</b>                    |           |             |           |           |
| A.A.D.T.                             | 35380     | 36290       | 36760     | 31190     |
| R 12 / 24 - %                        | 71.7      | 72.9        | 70.1      | 66.5      |
| R 16 / 24 - %                        | 87.1      | 88          | 85.4      | 84        |
| AM Peak Hour                         | 0900-1000 | 0700-0800   | 0900-1000 | 0900-1000 |
| One-way flow at AM peak hour         | 2110      | 2440        | 2430      | 1620      |
| T - % (AM)                           | -         | -           | -         | -         |
| PM Peak Hour                         | 1600-1700 | 1600-1700   | 1700-1800 | 1700-1800 |
| One-way flow at PM peak hour         | 2110      | 2210        | 2070      | 1860      |
| T - % (PM)                           | -         | -           | -         | -         |
| Prop.of commercial vehicles - 16 hr. | -         | -           | -         | -         |
| <b>WEST BOUND</b>                    |           |             |           |           |
| A.A.D.T.                             | 30740     | 31680       | 31410     | 26850     |
| R 12 / 24 - %                        | 66        | 67.4        | 64        | 59.9      |
| R 16 / 24 - %                        | 84.7      | 86          | 82.2      | 80.7      |
| AM Peak Hour                         | 0900-1000 | 0900-1000   | 0900-1000 | 0900-1000 |
| One-way flow at AM peak hour         | 1710      | 1850        | 1680      | 1090      |
| T - % (AM)                           | -         | -           | -         | -         |
| PM Peak Hour                         | 1800-1900 | 1800-1900   | 1600-1700 | 1600-1700 |
| One-way flow at PM peak hour         | 1770      | 1850        | 1740      | 1580      |
| T - % (PM)                           | -         | -           | -         | -         |
| Prop.of commercial vehicles - 16 hr. | -         | -           | -         | -         |

## 3. OTHER INFORMATION AND COMMENT